



Fast Track Service Land

Technical Team Kick-Off – AgriEnv Session Infoterra France

Véronique Lefèvre



geoland



European Commission Fast Track Service Land within the GMES initiative in FP-7



■ Concise product description

- Water abstraction by irrigation: indicator quantifying the volumes of water needed for a nominal development of crops – spatial scale to be defined
- Intermediate crops coverage rate: indicator quantifying the percentage of arable land covered with intermediate crops in autumn and winter

■ State of the art / overview of the methodology

- Water abstraction based on the quantification of crop water needs, precipitation and of a simple soil model
- Intermediate crop coverage rate based on the evaluation of the bare soil rate and of the presence of other crops
- Indicator extent: regional or local depending on test sites
- Indicator scale: to be defined with users:
 - Administrative scale: NUTS2/NUTS3
 - Hydrographical scale

■ Related projects

- AGRIMOD (French GMES project)



- **Test sites on which the product will delivered, starting April 2011**
 - Seine-Normandie catchment (regional and local extent)
 - Guadalquivir catchment (regional and local extent)
 - Struma – Strymonas catchment (regional and local extent) – in collaboration with ReSAC

- **Status on national / regional user interest (*for test site leaders only*)**
 - Interest of French users confirmed (CORPEN, IFEN, AESN)



■ Needs of CMS products

■ BioPar

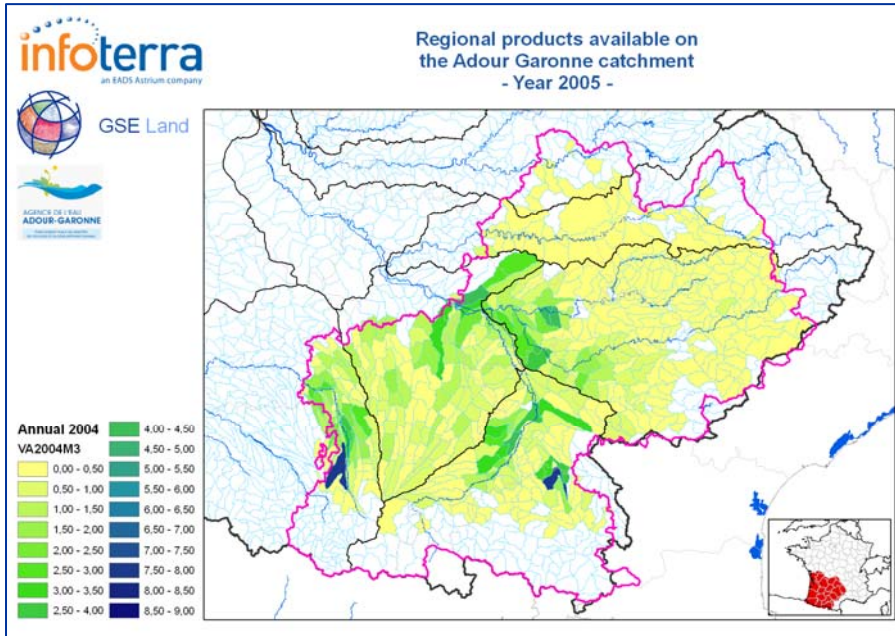
- Monthly BP-11 (March 2011 to September 2011), monthly BP-10 (March 2011 to September 2011)
- NRT production
- BP-11: same local areas as for AE-01
- BP-10: ~whole Seine-Normandie, Guadalquivir and Struma-Strymonas catchments

■ SATChMo

- SM-03: no new production effort – included in AE-01
- SM-15 on each catchment
- If possible, NRT production

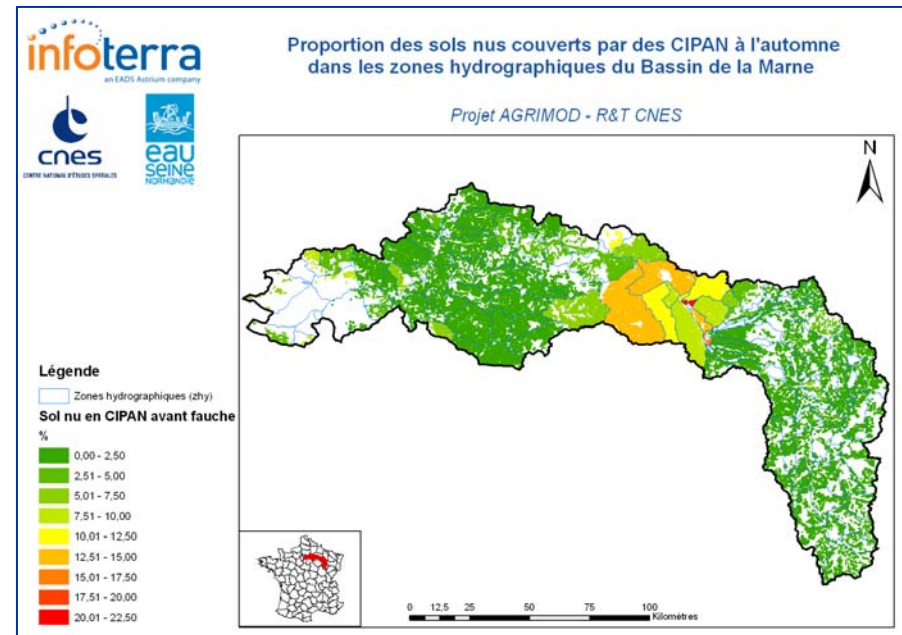
■ Needs of in situ data

- Weather data: temperature, precipitation, ETP
- Information on crop calendars
- Soil data
- Validation data (water consumption, field data)



Regional and annual water abstraction Adour-Garonne catchment, 2004

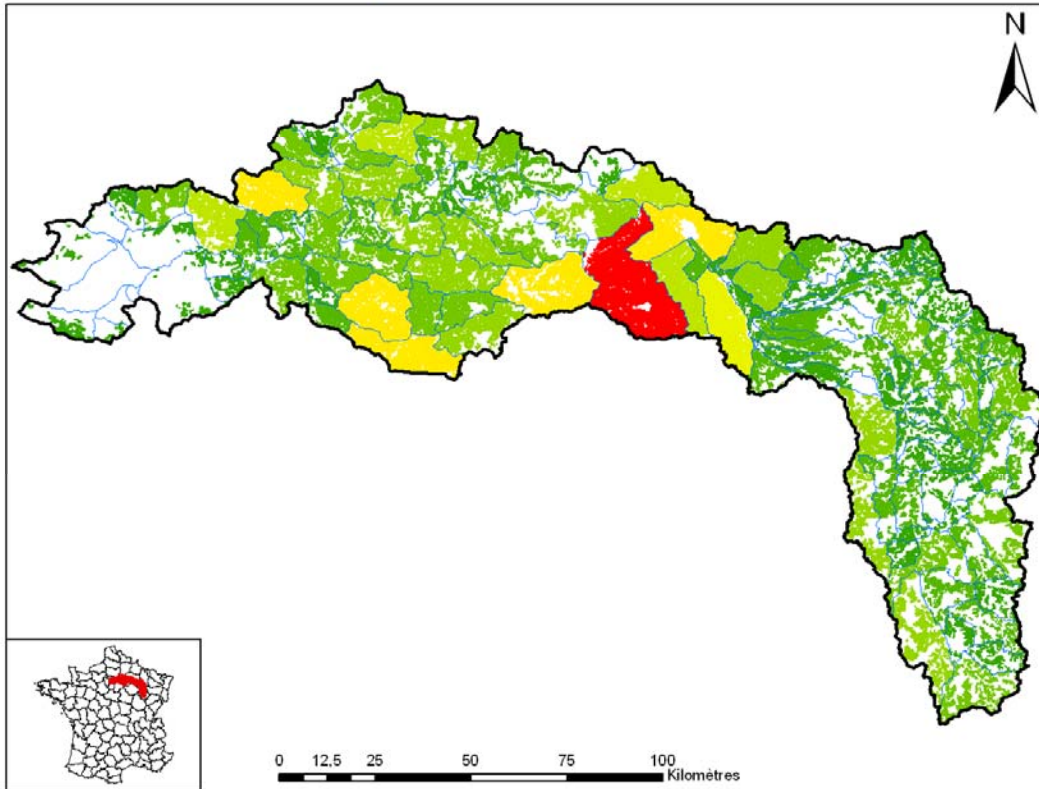
Local intermediate crop coverage rate Marne subcatchment, 2005





Surfaces arables en sol nu au 15 octobre 2005 dans les zones hydrographiques du Bassin de la Marne

Projet AGRIMOD - R&T CNES



Area of arable land covered with bare soil in october 2005, per hydro. zone
Marne subcatchment

