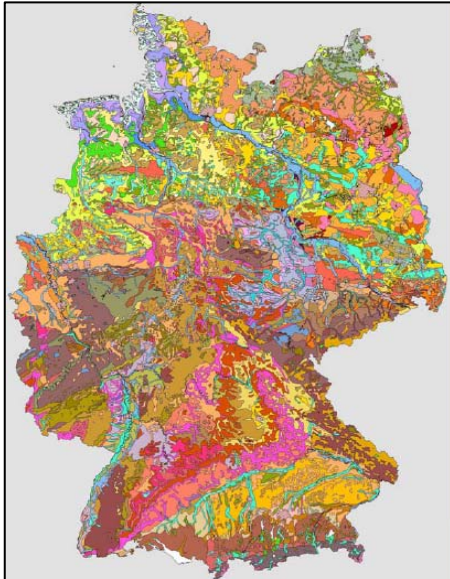


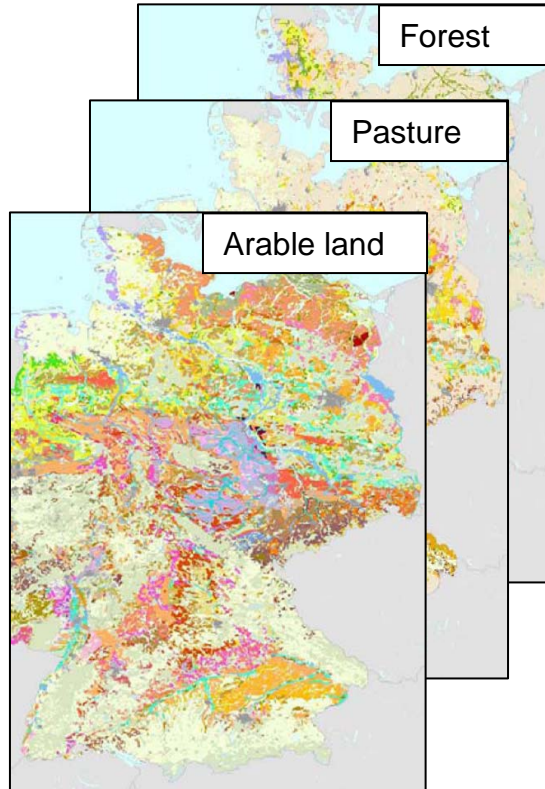
Joint Working Group on
Geo Sciences (BLA-Geo)

Joint Working Group on
Soil Protection (LABO)

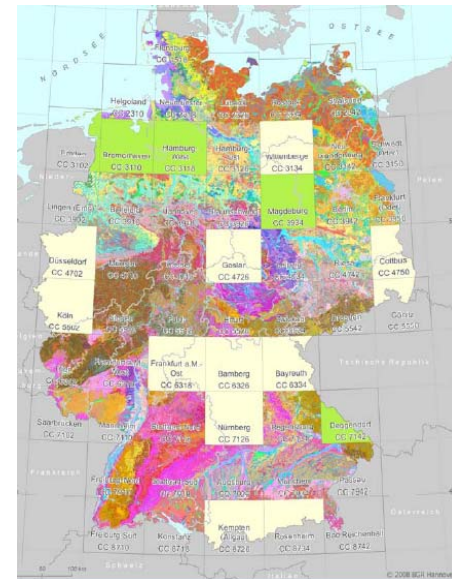




Soil Map 1:1.000.000



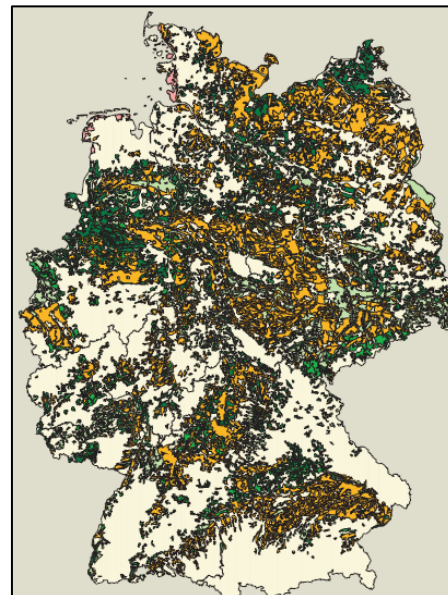
Soil Map 1:1.000.000
land use differentiation



Soil Map 1:200.000



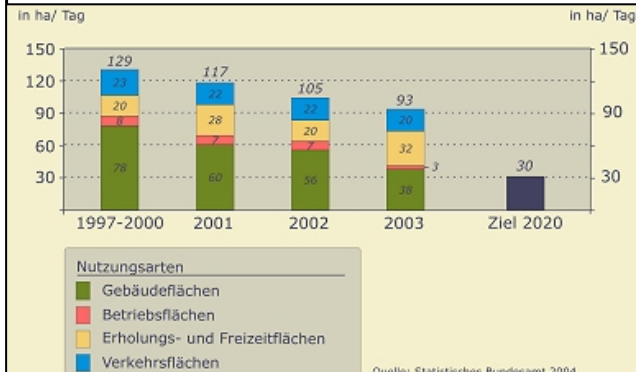
ESBN – Map of
Soil Regions
1:5.000.000



Actual erosion risk

Potential compaction risk

Land Use / Land Consumption



© Umweltbundesamt 2006

Number of contaminated sites

Kenngröße[1]	Stand	Altlastver- dächtige Flächen	Altlasten (AA)	Altstand- orte (AS)	Altlasten	Sanierung abgeschlossen	Gefährdungs- abschätzung abgeschlossen	Altlasten in der Sanierung	Überwachen
		1	1.1	1.2	2	3	4	5	6
Bd. Nummer									
Baden- Württemberg	12/2003	10.110	2.644	7.474	758	878	6.278	562	71
Bayern	03/2003	13.930	10.193	3.737	1.449	727	3.042	1.427	22
Berlin	02/2004	2.711	857	2.322	439	49	k.A. (139 + 187)	69	54
Brandenburg	12/2003	20.080	6.703	13.377	959	2.244	k.A.	59	309
Bremen	06/2003	2.965	55	2.910	101	307	499	56	62
Hamburg	1/2004	2.317	420	1.933	236	347	3.070	54	34
Hessen	03/2004	666	316	360	444	228	582	659	125
Mecklenburg- Vorpommern	12/2003	8.546	3.648	4.898	642	742	596	256	355
Niedersachsen	02/2004	39.876	8.976	30.900	884	582	965	222	80
Nordrhein- Westfalen	12/2001	42.868	18.337	24.642	1.917	2.901	8.915	1843	675
Rheinland-Pfalz	k.A.	k.A.	k.A.	k.A.	k.A.	k.A.	k.A.	k.A.	k.A.
Saarland	03/2004	1.807	1.671	136	412	26	588	78	139
Sachsen	04/2003	30.073	7.655	22.418	1.630	2.837	7.828	1151	1.538
Sachsen-Anhalt	11/2003	19.443	5.965	13.958	104	617	1.470	44	4
Schleswig-Holstein	12/2002	18.508	2.412	16.096	162	624	1.726	86	k.A.
Thüringen	11/2003	16.650	5.556	11.094	458	489	1.612	109	9

- Permanent Soil Monitoring
- Soil background values

- As long as no reporting obligation exist the data exchange is difficult for Germany because of the responsibility of the Federal States
- Art. 19 Soil Protection refers to “Tasks of the Government”

- **Projects in Progress:**
 - Using Soil Data for Climate Change Adaptation
 - Estimate Soil State with biological Parameters
 - Nationwide Overview on the permanent soil monitoring sites

- National Implementation of INSPIRE:
Geodatenzugangsgesetz (GeoZG)
[Government]
 - Steering Committee Geodata Infrastructure [Art. 19 (2)]
 - All Federal States have to pass own acts, Government has a prototype act
 - Regulations or decisions of INSPIRE are regulated after Art 14 GeoZG (Metadata, Monitoring, Reporting)
 - Annex Soil ???