



GMES Fast Track Service Land

# AGRI-ENV – Landscape and HNV Farmland

*Dirk Wascher*  
*Alterra*



geoland



European Commission Fast Track Service Land within the GMES initiative in FP-7



## Percentage of HNV farmland

Percentage of HNV farmland per region Areas of high interest inside each of the 30 SRRF Cluster Regions (total 30,000 km<sup>2</sup>) Administrative/ hydrographical / landscape (LANMAP2) units according to users' needs 2009 - 2011

Every 2 years

geoland, GSE Land, BOSS4GMES, Land Cover Mapping according to the LCCS of FAO, LPIS update

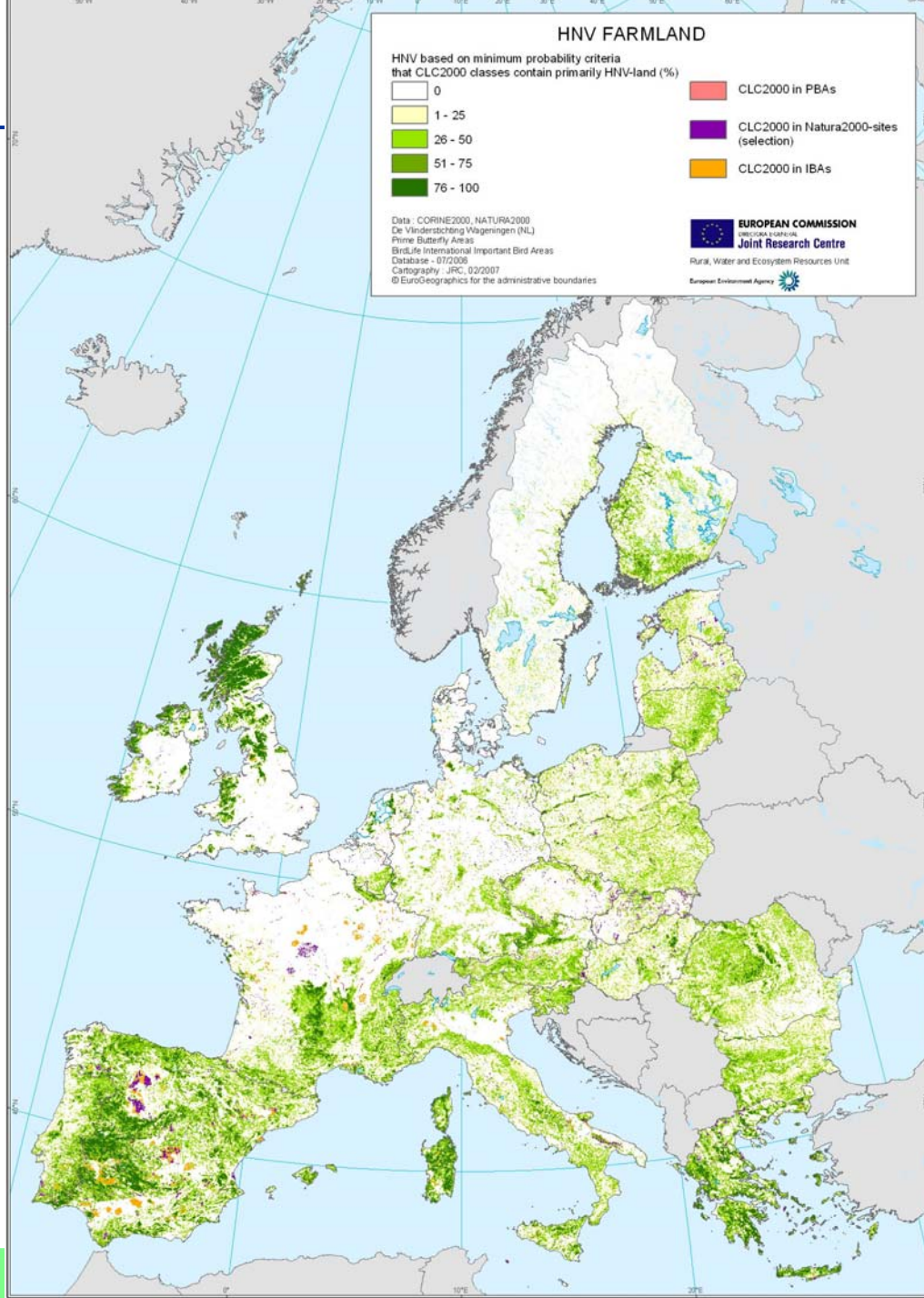
CMS Needs:

Euroland: land cover HR

BioPar: ?



# HNV Map





## **HNV farmland agricultural land use changes**

1. LUCA\* per HNV area
2. LUCA\* per LANMAP2-area
3. LUCA\* for 3km buffer around HNV area
4. LUCA\* for drainage basin where HNVarea is part of.
  - Land use change accounts = Percentage of transformations between arable and grassland, and from arable/grassland to urban
  - Areas of high interest inside each of the 30 SRRF Cluster Regions (total 30,000 km<sup>2</sup>) Administrative/ hydrographical / landscape (LANMAP2) units according to users' needs

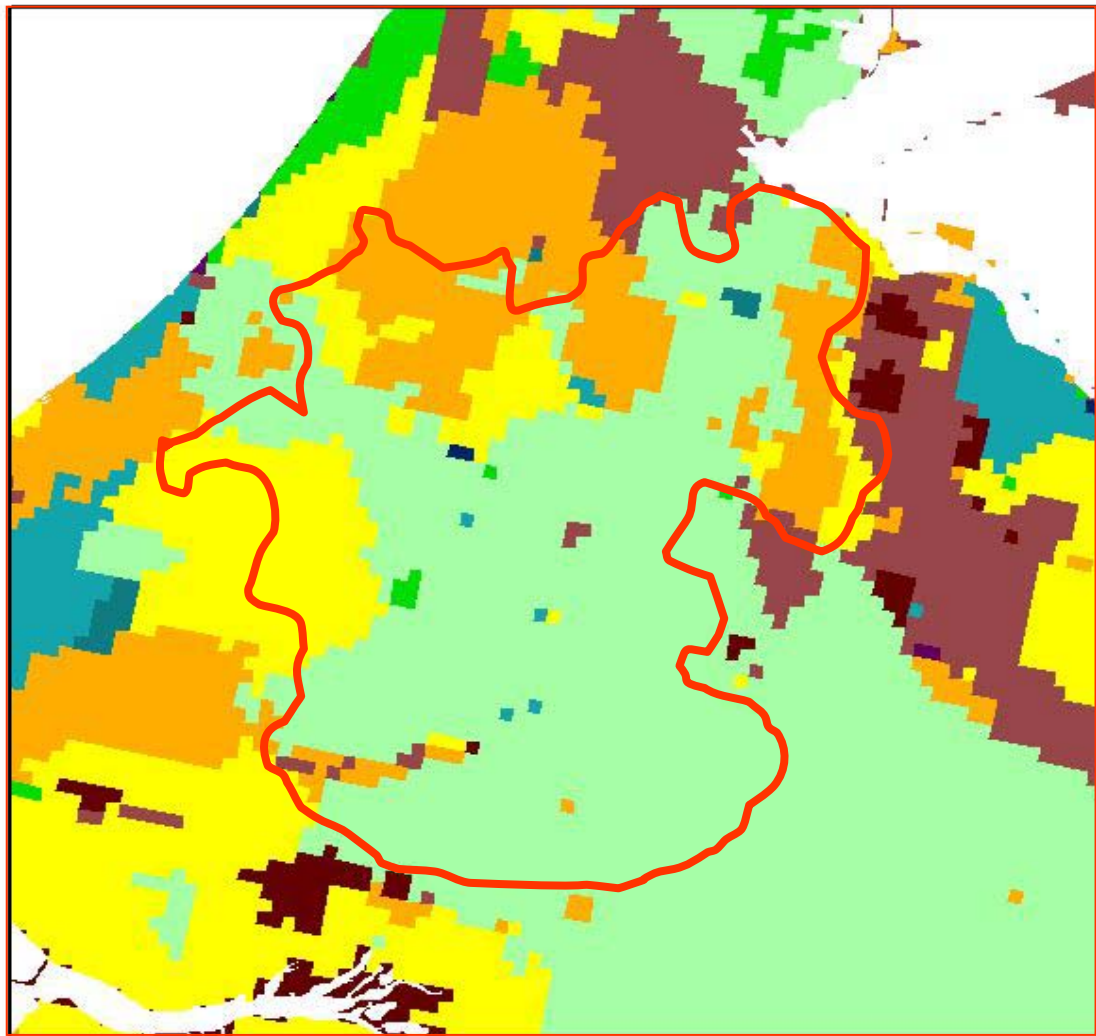
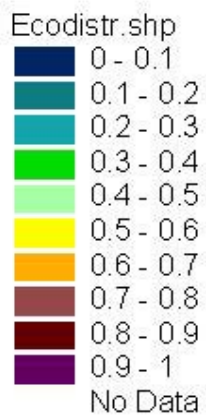
CMS Needs

Euroland: land cover HR

BioPar: ?



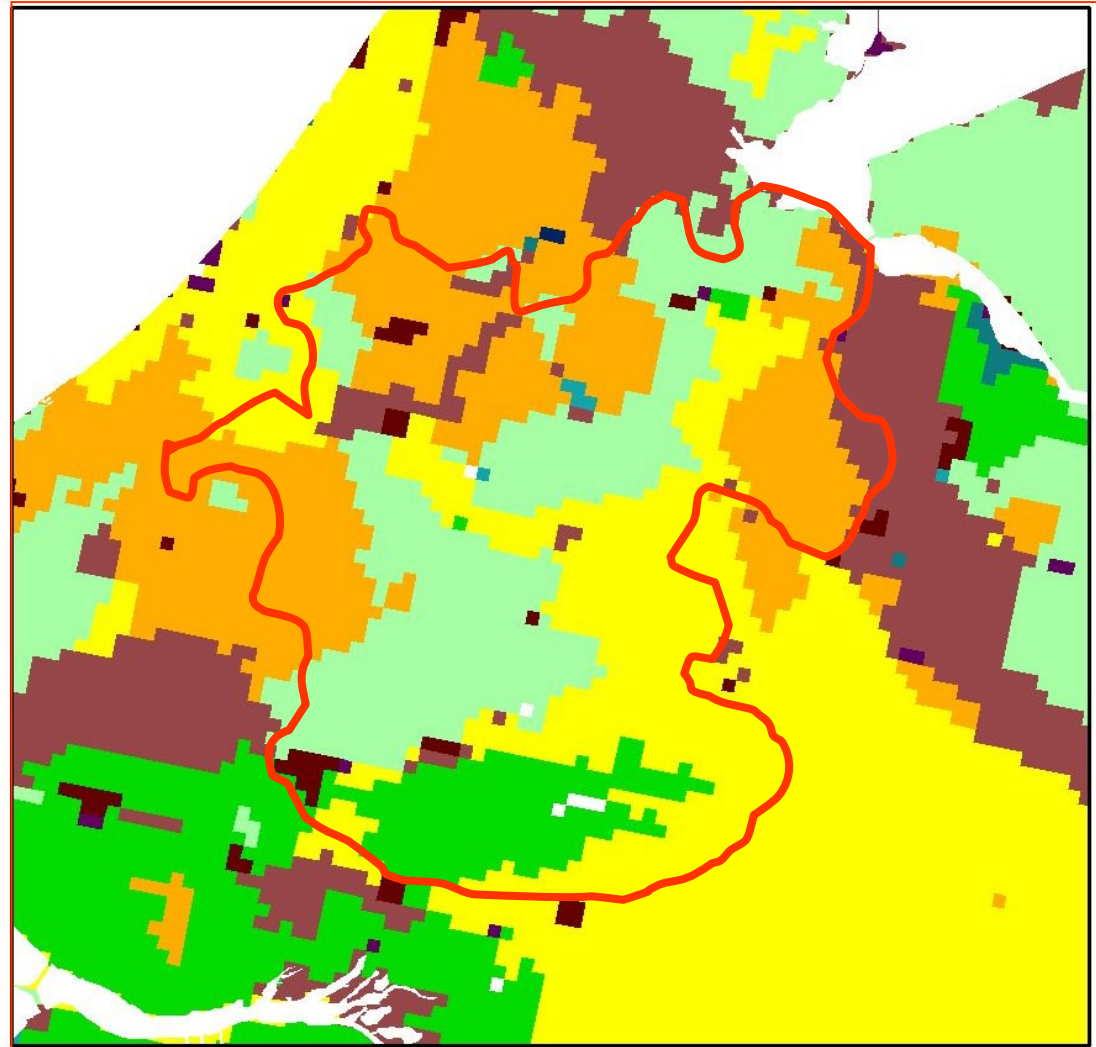
DIVERSITY 0 -100%





DIVERSITY 0 -100%

Ecodistr.shp





## **Landscape coherence between intensive agricultural areas**

Percentage of transformations from arable to grassland between intensive agricultural areas per LANMAP2 units High-risk areas inside EU-08, EU-09, EU- 10, EU-15 (total 6.000 km<sup>2</sup>)

Administrative/ hydrographical / landscape (LANMAP2) units according to users'

2009 - 2011

Every 2 years

SAGE, geoland, GSE Land and BOSS4GMES for the development of the LMCS

CMS Needs

Euroland: land cover HR

BioPar: ?



period: 1990-2000

calculation:

- **The most significant transformations occurred on the peripheries of Europe (Ireland, Iberian Peninsula, Eastern-Central European countries). This changes are due to the economical transformations. Some Eastern-Central European countries (Romania, Bulgaria) still stand before these changes.**
- **Least changes occurred at mountainous regions related to the limited land use**

Land cover change rate (%)

