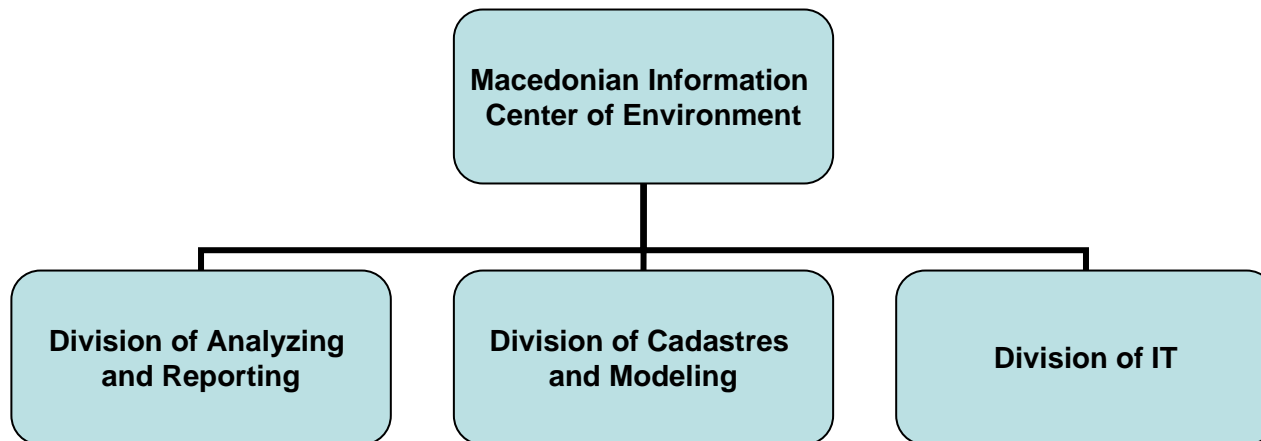


Presentation

- **Macedonian Environmental Information Centre** within the Ministry of Environment and Physical Planning regarding soil is responsible for **gathering and analyzing of data and information** related to any way of **soil degradation** and **contamination**, land use change, erosion, salination, etc.

- **Data and information**
 - certain published papers
 - books of individual authors or group of authors
 - environmental statistics
 - measurements from some institutions
 - environmental inspectorate



- ✓ There is an erosion map to the scale 1:50 000 was completed in 1992, but the digital version was finished in 2002.
 - ✓ There is a map of the irrigation net in Macedonia, and these data, combined with a climatic map, could be used for the quick assessment of area vulnerable to salinization
 - ✓ A soil map to the scale 1:50 000 has not been finished yet
-
- All activities are spread over different institutions in agriculture, forestry and water economy
 - One of the biggest problems is the communication between different institutions

- ✓ The PHARE project **Corina Land Cover 2000** (data of 1996) based on decoding of satellite images **give data about land cover. All maps are to the scale 1:100 000.** Based on these data an area vulnerable to land degradation and land use change could be assessed
- ✓ Indicators **Progress in management of contaminated sites** and **Land take** have been prepared
- ✓ Yearly reports from **legal and natural persons holder of waste**
- ✓ Yearly reports from **mayor of municipalities regarding waste**
- ✓ Yearly reports **from landfills-** General data for the landfills, accepted steps in the activity of landfills etc.

Practical Arrangements

- ✓ **Guidelines for data collection**
- ✓ **Reporting guidelines**
- ✓ **Questionnaire and manual to help the feeling the questionnaire**
- ✓ **Additional consultation**

Finance and experts support for projects related to:

- 1. Assess the risk for different soil threats related to various agricultural practices to occur (compaction, erosion, organic matter decline and salinization).**
- 2. Digital Soil Mapping**
- 3. Updating of Erosion Map**

- **Based on the approved Strategy for Approximation and implementation of the Environment Acquis, INSPIRE will be part of national legislation.**
- **Component 2 of IPA project-Strengthening the Central and Local Level Capacities for Environmental Management**
 - ✓ **Development of National Environmental Information System (NEIS)**
 - ✓ **Rulebook to regulate methodologies and procedures in the creation, access, protection and uniformity of environmental information in the related institutions and the country as a whole and preparation of Guidelines upon it.**